

INTERACTIVE TECHNOLOGY FOR SMART RESTAURANTS & CAFÉS

SMART COFFEE SHOPS

I-CAFÉ: A BRAND NEW CONCEPT



SUMMARY

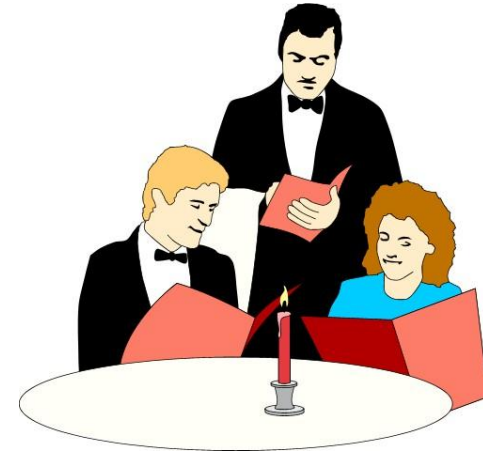
- The Food & Beverage industry is slow catching up with new technology
- We are introducing a new high-tech concept for restaurants and coffee shops offering a wide range of entertainment and excitement
- Our i-Café is a unique smart coffee shop with interactive tables, interactive walls and interactive floor. It the first such coffee shop in the world.



INTERACTIVE TECHNOLOGY IS THE FUTURE OF THE F&B BUSINESS

Why Interactive Technology?

- The F&B industry has been slow in adopting new technology
- No significant innovation for a long time – since fast food
- The world has changed and customers expect more
- The good news – the future of dining is already here
- Interactive technology is bringing entertainment to eateries and cafés
- **‘Eatertainment’** is the new buzz word



IT IS NOT JUST ABOUT SERVING FOOD AND DRINKS, IT IS ALSO ABOUT CREATING AN ATMOSPHERE

Smart Café Ecosystem

- **Interactive table**
- **Interactive wall**
- **Interactive floor**
- **Interactive Partition**

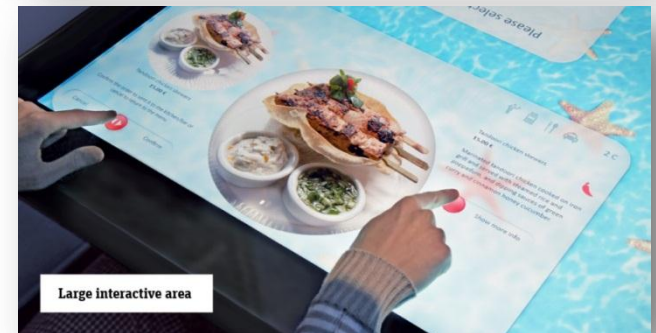


Together they create a unique all-encompassing interactive complex, which will transform the entire restaurant / café into an intelligent, user-friendly system.

IMAGINE THAT YOU DID NOT NEED A WAITER TO PLACE AN ORDER

Smart Interactive Table

- Customers can select a preferred language
- Full description with HD photos & videos of each food & drink menu item with a single touch
- Instant orders without having to wait for a waiter
- While waiting, catch up with current news or check your Facebook timeline
- Live online broadcasts from the kitchen
- Watch videos, share photos or exchange greeting cards with fellow diners



Every visit is a unique experience

IT'S NOT JUST “A CAFÉ”, IT IS THE RETHINKING OF THE WHOLE EATING OUT CONCEPT

Interactive Floor

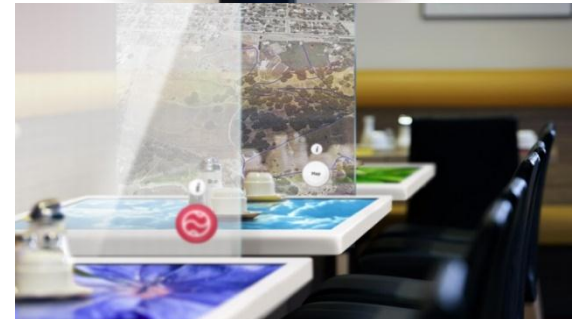
- Immediately reacts to movement. Autumn leaves will scatter, flower petals will fall off, and fish will swim away under your feet.

Interactive Wall

- A projection that can quickly change the interior, depending on the event or even the time of the day.
- Themes displayed on walls interact with guests directly and react immediately to motion, presenting limitless possibilities for entertainment.

Interactive Partition

- The translucent surfaces easily turn into personal screens on which visitors can draw, play, view photos, watch videos with a touch.
- Transparency mode switch allows guests to select the level of privacy.



I-CAFÉ IS A WORLD'S FIRST NEW & UNIQUE INNOVATIVE CONCEPT

- Socializing over a cup of coffee has become an integral part of urban life.
- Meeting places are shifting from boring offices to coffee houses.
- A café is not just a place to go to for a quick meal, but also a place to work in.
- In our smart café, you can display photos, share presentations or even video call your friends on Skype.



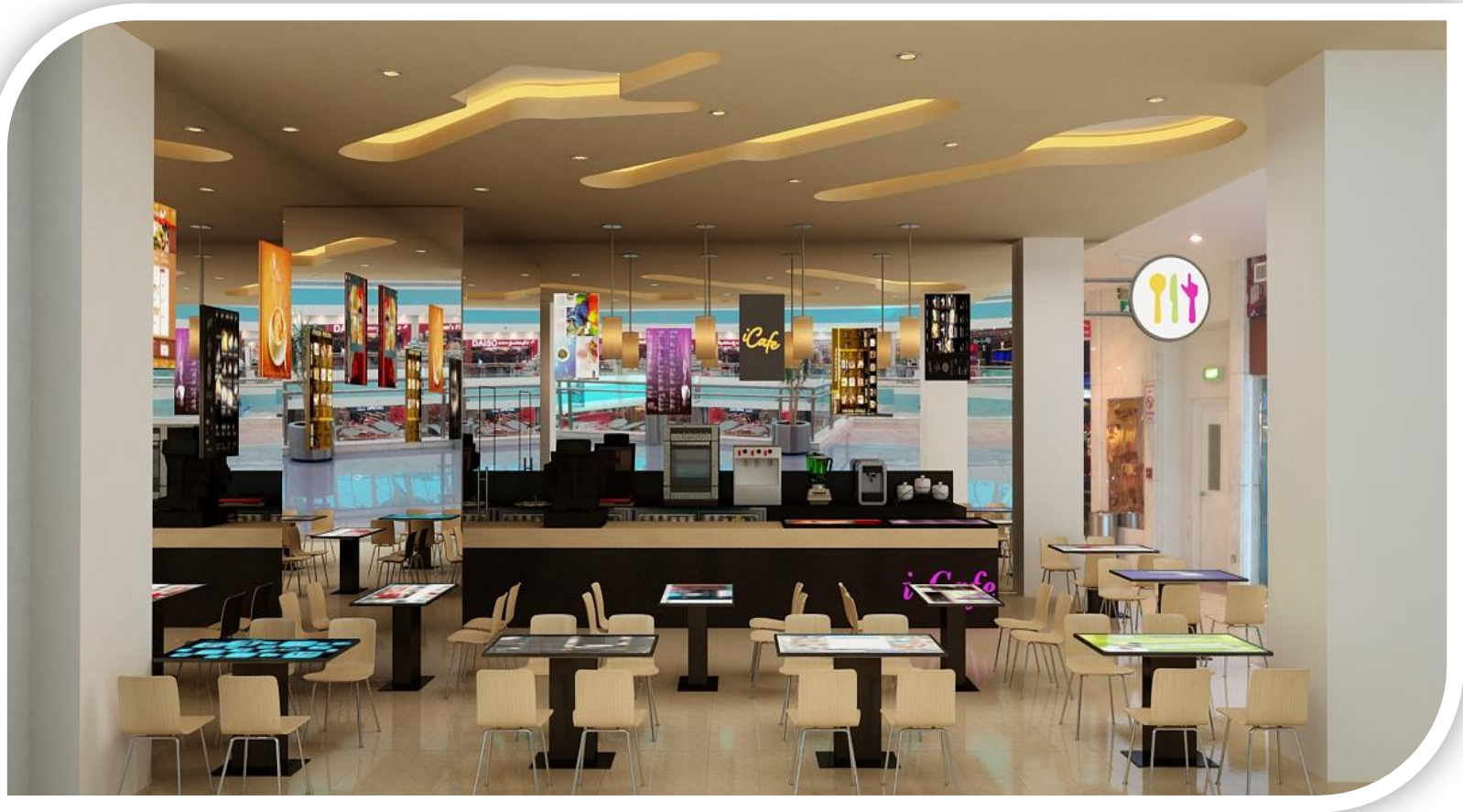
i-café is a wonderful place to get together, whether for a friendly chat, or a business meeting. It is easy to order and easy to impress here.

I-CAFÉ TECHNOLOGY IS UNIQUE AND THE POSSIBILITIES ARE LIMITLESS

- i-Café is a unique smart coffee shop with interactive tables, interactive walls and interactive floor. It will be the first such coffee shop in the world.
- The tables represent cutting edge technology. Their unique design incorporates built-in sensors for touch and gesture, mini-computers, cameras and Wi-Fi connectivity.
- The display is next-generation 4K (4,000 pixels) UHD (Ultra High Definition). These tables are the world's first 4K UHD interactive tables.
- A unique software is developed, built on Microsoft Windows8 technology. The software is customizable and new apps can be developed and added all the time; the only limitation is one's imagination.



I-CAFÉ IS THE ULTIMATE DESTINATION WITHIN A DESTINATION



I-CAFÉ IS THE ULTIMATE DESTINATION WITHIN A DESTINATION

